

THE BIKE SCOUTS[®]
PATHFINDER/TEAM



The Bike Scouts community-based disaster response approach

INTRODUCTION

The Bike Scouts has been in operation around the Philippines and in 21 other countries for almost a decade, giving it an advantage in terms of insight, access to knowledge, and resources for community-based disaster preparedness and response. We are the only organization of our kind in the Philippines with vast experience in the most extreme disaster events including two category-5 typhoons, a volcanic eruption, and the global Covid-19 pandemic.

The Bike Scouts community-based response system is a professionally-developed method for community participation in resilience, preparedness, and specific aspects of response. The Bike Scouts operates proprietary technology and has formal partnerships with professional organizations and institutions that make it possible to integrate local engagement, data analysis, policy, software, hardware, and technical capacity for the work that it does - no part of this document should be duplicated and applied without the support of this backend infrastructure.

Pathfinder Team is the copyright property of **The Bicycle Scouts Project**.

PARTNERSHIPS



Bike Scouts is partnered with **Zion Emergency and Disaster Response Unit (ZEDRU)** for technical response and training, the **Rapid Emergency Telecommunications Team (RETT)** of the Philippines Office of Civil Defense (OCD), **UNOCHA** for community engagement and humanitarian response coordination, the **University of the Philippines Resilience Institute** for science-based disaster analysis, and the **Global Network of Civil Society Organisations for Disaster Reduction (GNDR)** the largest international network of organizations committed to improving the lives of people affected by disasters worldwide.

DEFINITIONS



The Bike Scouts Pathfinder Team is the only community-based Volunteer Bicycle Messenger service for disaster response in the world with almost a decade of service.

DEFINITIONS



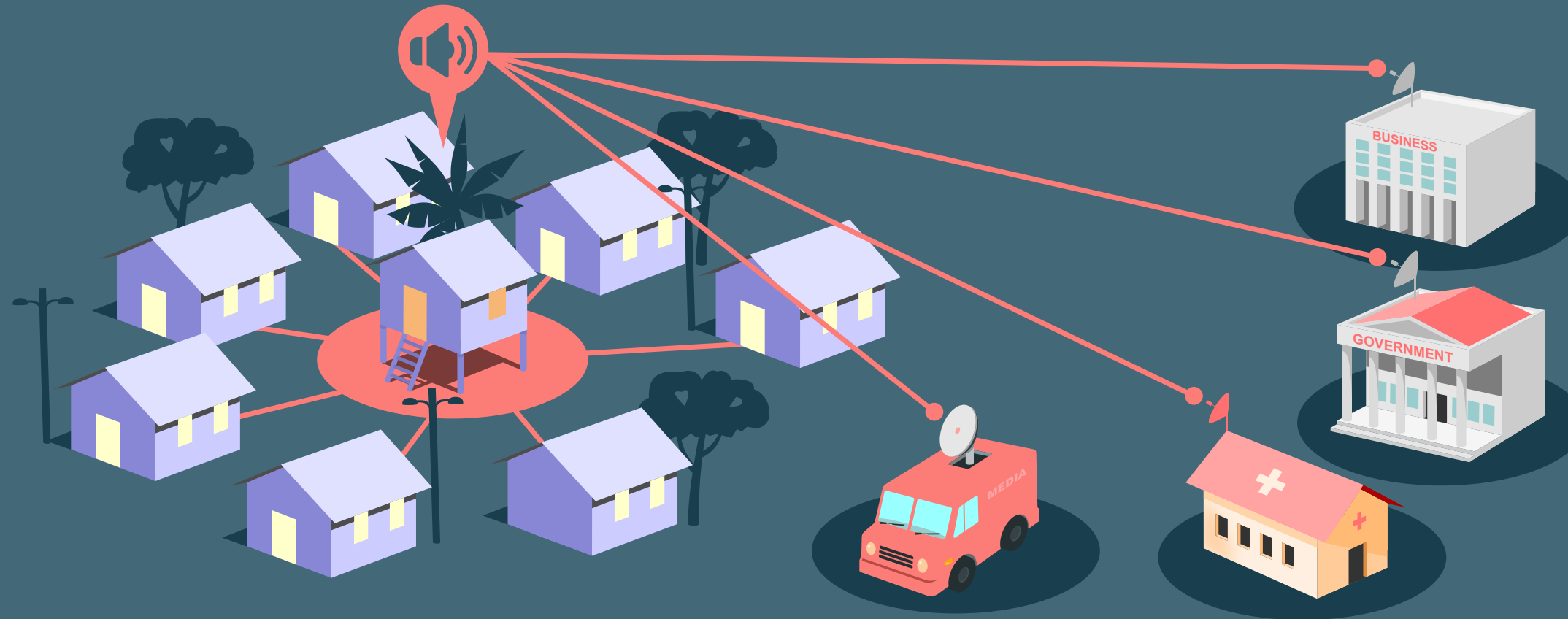
The Bike Scouts Pathfinder Team is a resilient-mobility - based communications and information initiative for disaster response - it is not a search & rescue team.

DEFINITIONS



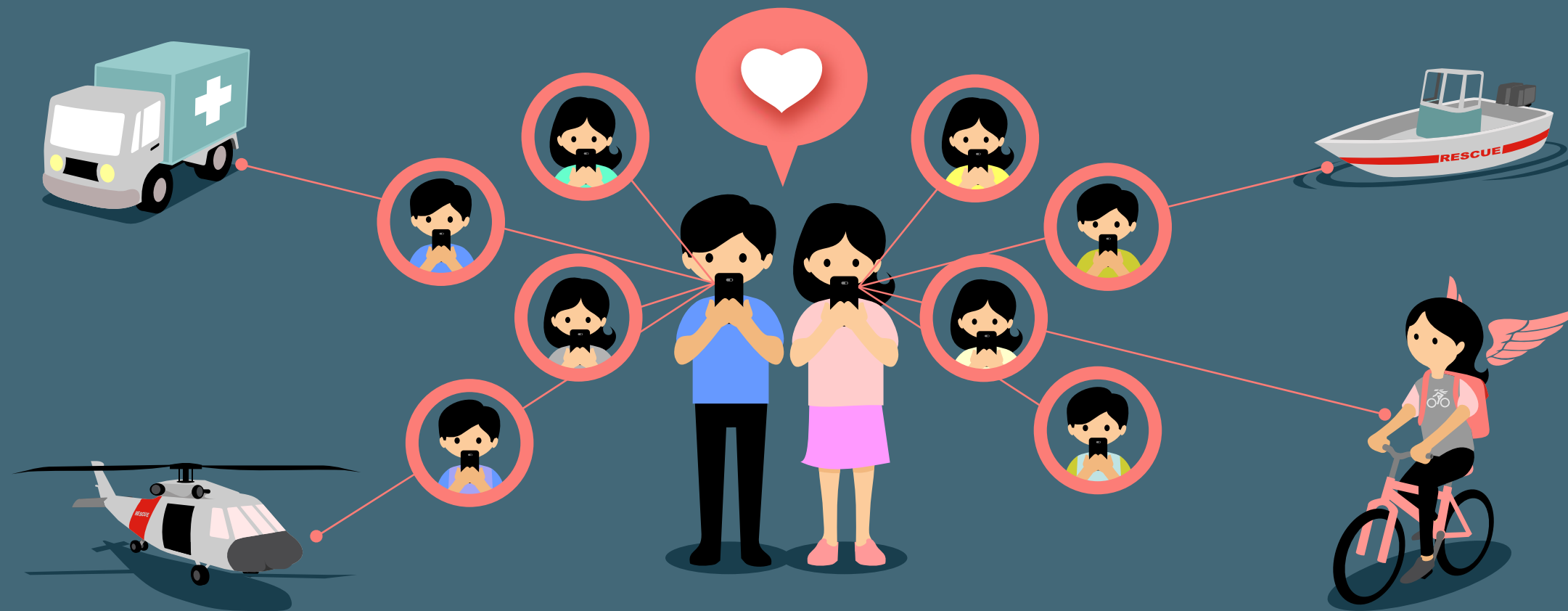
The Bike Scouts Pathfinder Team is a nationwide network-of-support that provides scalable community-based response to disaster events.

METHODOLOGY



The Bike Scouts approach to community-based response is focused on communities' self-reliance in terms of local capacity to take action with a scalable network of support.

METHODOLOGY

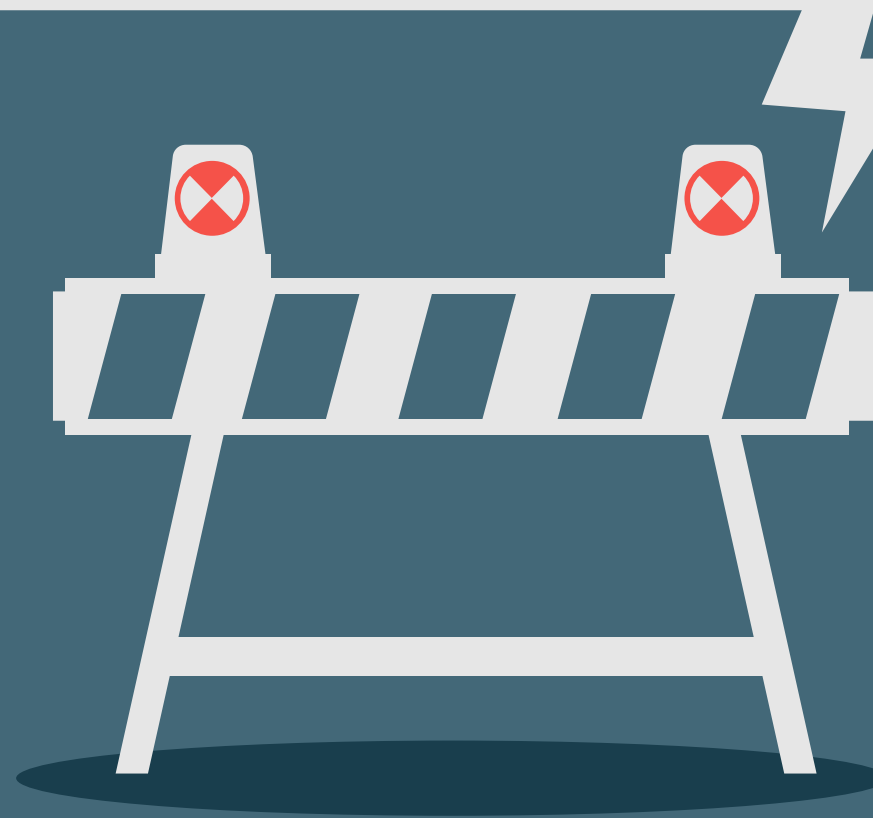


The Bike Scouts network of support runs on its first-of-its-kind social platform for “social teamwork” that provides communities with access to global and scalable resources via the Bike Scouts ecosystem of web, social, and app-based resources.

METHODOLOGY



The Bike Scouts community platform and network is strictly non-political and non-religious. We serve all.



METHODOLOGY



The Bike Scouts follows a carefully-calibrated approach to community engagement based on two decades of study and professional experience that allows us to operate effectively and efficiently.

METHODOLOGY

First Steps



Genuinely engage the community and provide education, training, proper equipment and supplies that creates preparedness and provides the means to respond.



Genuinely act on climate-related issues in your community, this is the root of all disasters. Activate the community to participate in finding and making the solutions.



Genuinely ensure that all decision-making for resilience and response are based on science and data. Nothing should interfere with this requirement.



Genuinely revisit local policy and regulations to make sure that it supports communities and does not hinder community-based response and participation.



Genuinely adopt bicycle mobility policy and infrastructure. This is the foundation for our response.

METHODOLOGY

Basic Skills (for **deployment team** members only)



Above average bicycle handling and maintenance skills.



Professional wilderness and rescue skills training and experience.



Must have completed basic first-aid and emergency response course.



Must have completed basic photo and video documentation course.



Must have completed basic radio and satellite communications course.



Must have proven track record in social good, emergency and disaster response work.

METHODOLOGY

Basic Skills (for [community volunteers](#) and members)



Learn about proper bicycle handling, maintenance, and road safety.



Participate or organize basic photo and video-making workshops.



Learn basic first-aid for your rides and for everyday situations.



Participate or organize social good projects and activities for your own community.



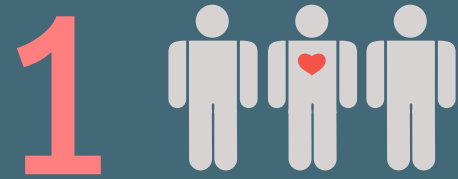
Participate in or organize regular community bicycle rides. It helps strengthen sense of community.

METHODOLOGY

TEAMS & COMMUNITIES

METHODOLOGY

Basic Operations Form local teams for response work



Find at least 10 people (or an existing organization) who may be interested to become a local Bike Scouts team in their area. To be effective, it's best to invite people for a local team who live in the same area or community.



From the team, select a leader who can dedicate time to manage the team and its activities, he or she must have a passion for building a community and doing good for others.



Invite your team members to sign-up for the Bike Scouts group page on Facebook (The Bicycle Scouts Project), visit the website (bikescouts.org), and sign-up for the Bike Scouts app - all of this helps teams stay connected and updated about activities.



Join or organize team and community rides, social good projects, and collaborate with other teams on response work nationwide. Schedule team training workshops through the Bike Scouts group page or check for schedule announcements on the app (coming soon) or website: bikescouts.org

METHODOLOGY

Basic Operations Engage your local community as Bike Scouts



Organize a local version of any of the Bike Scouts flagship events, projects, and activities. Inquire through the group page, send an email (hello@bikescouts.org), or browse the website (bikescouts.org) to learn more.

METHODOLOGY

RESPONSE & OPERATIONS

RESPONSE

Basic Operations Team components of Bike Scouts/ Pathfinder Teams



Volunteer Bicycle Messengers collect data and deliver supplies and messages in disaster areas.



Carrier Teams support riding groups by doing the heavy lifting wherever supplies are needed.



Bike Scouts uses drones to survey surrounding terrain for data and documentation.

RESPONSE

Basic Operations Deployment Protocols: When do we deploy?

These conditions must be present or considered:



Is there serious damage to road access that will require use of bicycles?



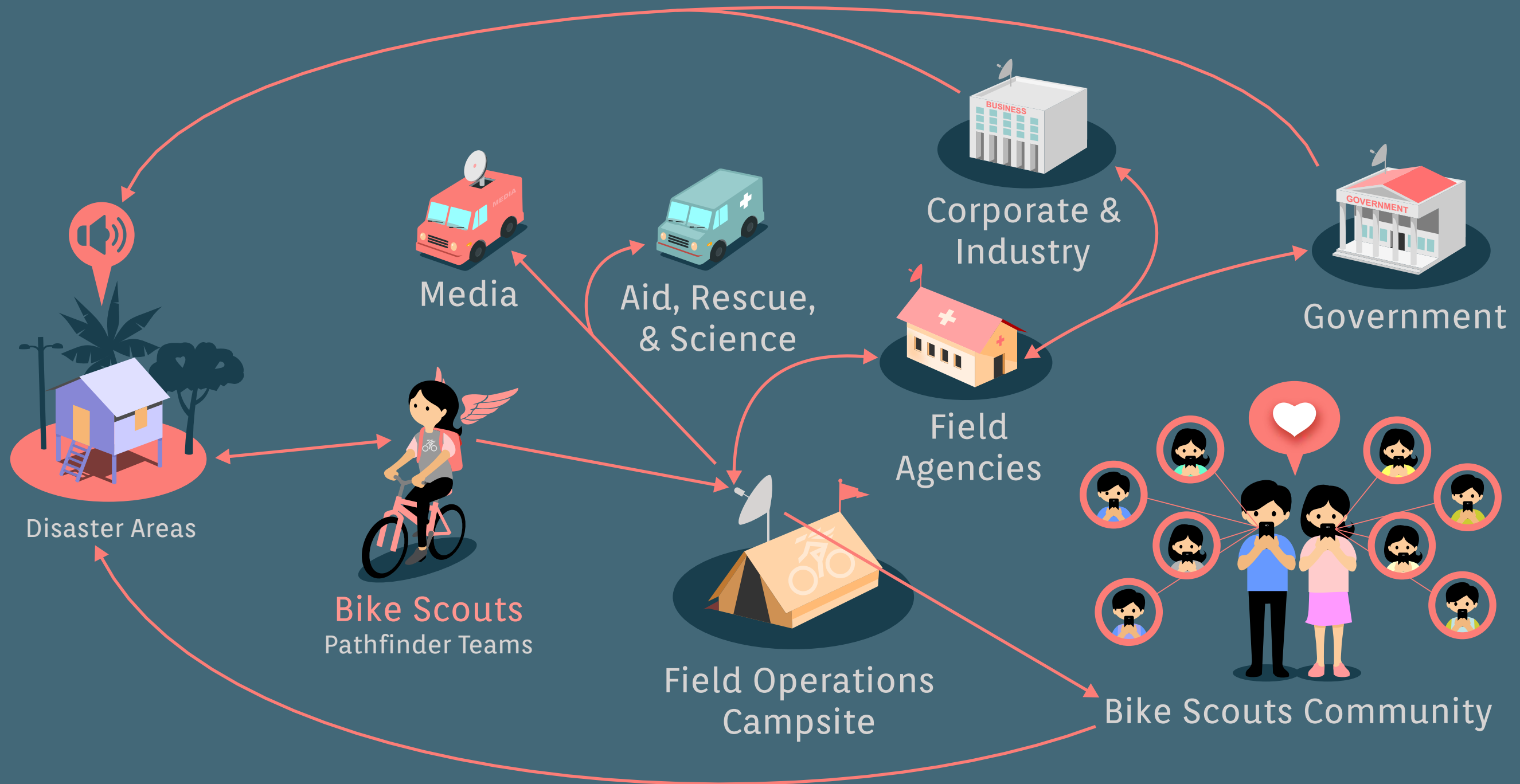
Is there a complete loss of traditional communications?



Is our presence in the disaster area redundant?

RESPONSE

Basic Operations Field Operations diagram



RESPONSE

Basic Operations Special Considerations



Persons With Disability

It is necessary to have someone on the team that can handle communication and proper handling of persons with disability.



Critical Medical Needs

People with critical illnesses and pre-existing conditions always require support for access to medication and treatment during disasters.



Children & The Elderly

Special care and accountability is required for the proper handling of very young children and the elderly during disaster evacuations.



On some deployments, women and children at evacuation centers or in isolated areas may request for hygiene products and other related supplies. Always have these items packed and ready.



DO NOT DISTRIBUTE prescription medicine without a doctor's approval. Always document distribution of medical supplies.

RESPONSE

Basic Operations Priority Tasks



Message Delivery

Daily collection and delivery of messages from people isolated by disaster impact using bicycle messengers, satellite communications, and radio.



Data Collection

Disaster data collection and processing to help aid and rescue organizations deploy resources to the field faster and more efficiently.



Supply Delivery

Delivery of essential supplies to people and places isolated by the impact of disasters, focusing on the most critical needs for people with special needs.

RESPONSE

Basic Operations Ethics and Principles

- Bike Scouts is an independent, non-political, and non-religious entity that serves all and protects everything - the Bike Scouts name, logo, resources, and properties may not be used to advance political, religious, or any non-humanitarian purpose. People and animals that need assistance in disaster areas and emergency situations must always be treated with utmost dignity.
- Bike Scouts data, information, and communication packages are confidential and may not be shared with anyone for any reason without approval from the management team, the persons who own the data, or may be affected by the sharing of data or information.
- If you have no patience, compassion, or sense of humanity to understand the difficulty and suffering of people in distress - **do not deploy**. If you are unwilling to sacrifice for the good of others **do not join**. Lead if you are a leader, follow if you are a teammate - always ride for your team, **serve all, and respect all life**.

THE BIKE SCOUTS[®]
PATHFINDER/TEAM



The Bike Scouts community-based disaster response approach

bikescouts.org

dispatch@bikescouts.org